

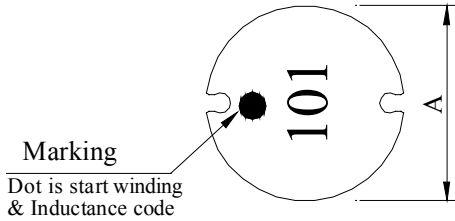
SPECIFICATION FOR APPROVAL

REF :

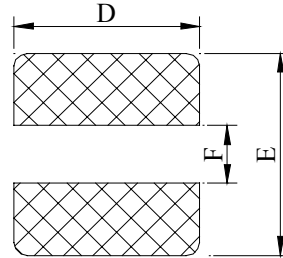
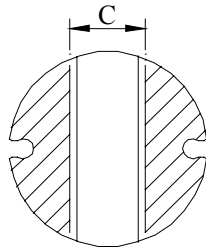
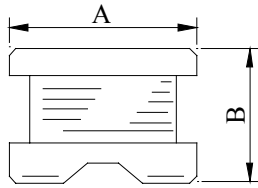
PAGE: 1

PROD. NAME	SMD POWER INDUCTOR	ABC'S DWG NO. ABC'S ITEM NO.	SR0603□□□□L□
---------------	--------------------	---------------------------------	--------------

. CONFIGURATION & DIMENSIONS :



- A : 5.6±0.2 m/m
- B : 3.7±0.3 m/m
- C : 2.3 ref. m/m
- D : 5.8 ref. m/m
- E : 6.0 ref. m/m
- F : 1.7 ref. m/m



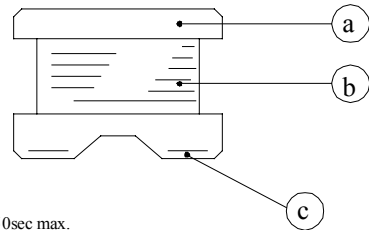
(PCB Pattern)

. SCHEMATIC DIAGRAM :



. MATERIALS :

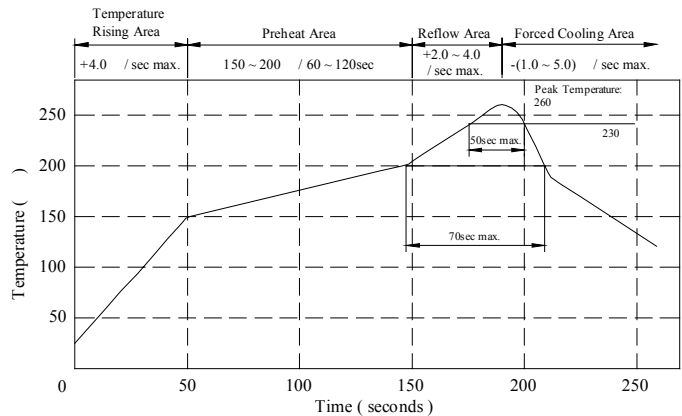
- a . Core : Ferrite DR core
- b . Wire : Enamelled copper wire (class F)
- c . Terminal : Ag/Ni/Sn
- d . Remark : Lead content 200ppm max.
include ferrite



Peak Temp : 260 max.
Max time above 230 : 50sec max.
Max time above 200 : 70sec max.

. GENERAL SPECIFICATION :

- a . Temp. rise : 40 max.
- b . Rated current : Base on temp. rise
& L / LOA=10% max.
- c . Storage temp. : -40 ----+125
- d . Operating temp. : -40 ----+105
- e . Resistance to solder heat : 260 .10 secs.



AE-001A

SPECIFICATION FOR APPROVAL

REF :

PAGE: 2

PROD. NAME	SMD POWER INDUCTOR	ABC'S DWG NO.	SR0603□□□□L□
		ABC'S ITEM NO.	

. ELECTRICAL CHARACTERISTICS :

DWG No.	Inductance (μH)	Q ref.	Test Freq. (Hz)		SRF (MHz) nom.	RDC (Ω) max.	IDC (A) max.
			L	Q			
SR06031R5ML□	1.5±20%	24	1K	7.960M	85.0	0.040	3.00
SR06032R5ML□	2.5±20%	21	1K	7.960M	74.0	0.045	2.35
SR06033R3ML□	3.3±20%	21	1K	7.960M	68.0	0.048	2.20
SR06033R9ML□	3.9±20%	22	1K	7.960M	62.0	0.050	2.10
SR06034R7ML□	4.7±20%	20	1K	7.960M	56.0	0.066	1.80
SR06035R0ML□	5.0±20%	19	1K	7.960M	50.0	0.070	1.60
SR06036R8ML□	6.8±20%	19	1K	7.960M	44.0	0.110	1.38
SR06037R5ML□	7.5±20%	19	1K	7.960M	38.0	0.120	1.29
SR0603100ML□	10.0±20%	24	1K	2.520M	34.0	0.150	1.14
SR0603120ML□	12.0±20%	23	1K	2.520M	30.0	0.160	1.02
SR0603150ML□	15.0±20%	22	1K	2.520M	28.0	0.180	0.93
SR0603180ML□	18.0±20%	23	1K	2.520M	24.0	0.250	0.82
SR0603220ML□	22.0±20%	20	1K	2.520M	20.0	0.275	0.75
SR0603270ML□	27.0±20%	19	1K	2.520M	19.0	0.300	0.67
SR0603330KL□	33.0±10%	23	1K	2.520M	15.0	0.450	0.61
SR0603390KL□	39.0±10%	22	1K	2.520M	13.0	0.460	0.56
SR0603470KL□	47.0±10%	20	1K	2.520M	13.0	0.550	0.52
SR0603560KL□	56.0±10%	17	1K	2.520M	12.0	0.615	0.48
SR0603680KL□	68.0±10%	17	1K	2.520M	12.0	0.720	0.44
SR0603820KL□	82.0±10%	15	1K	2.520M	11.0	0.840	0.40
SR0603101KL□	100.0±10%	28	1K	796K	9.6	0.950	0.38
SR0603121KL□	120.0±10%	27	1K	796K	8.1	1.100	0.36
SR0603151KL□	150.0±10%	28	1K	796K	7.5	1.430	0.32
SR0603181KL□	180.0±10%	26	1K	796K	6.9	1.600	0.30
SR0603221KL□	220.0±10%	26	1K	796K	5.5	2.000	0.26
SR0603271KL□	270.0±10%	26	1K	796K	4.9	2.400	0.24
SR0603331KL□	330.0±10%	28	1K	796K	4.7	3.200	0.20
SR0603391KL□	390.0±10%	28	1K	796K	4.1	3.400	0.18
SR0603471KL□	470.0±10%	29	1K	796K	3.5	4.550	0.15

- 1). □ : Packaging information... [A] : Bulk [B] : Taping Reel
 2). IDC base on temp. rise 40 max. & L/L0A=10% max.

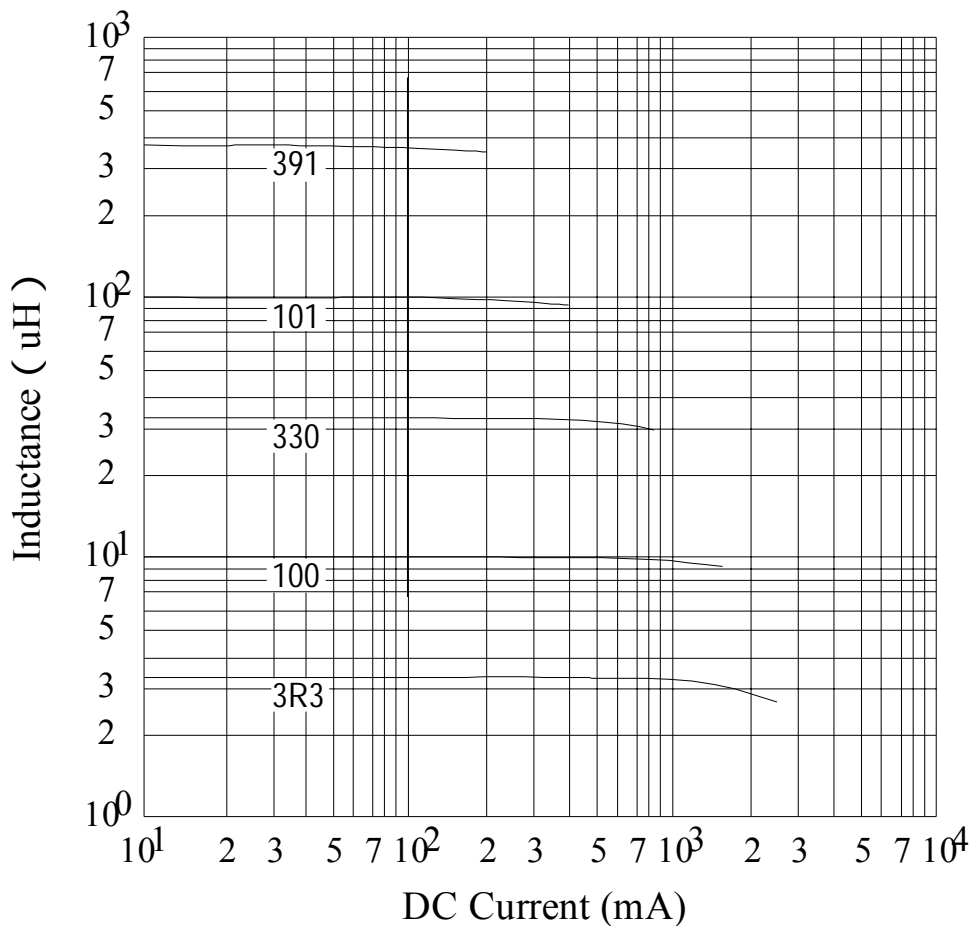
SPECIFICATION FOR APPROVAL

REF :

PAGE: 3

PROD. NAME	SMD POWER INDUCTOR	ABC'S DWG NO. ABC'S ITEM NO.	SR0603□□□□L□
---------------	--------------------	---------------------------------	--------------

. INDUCTANCE VS. DC CURRENT CURVE :



AE-001A

SPECIFICATION FOR APPROVAL

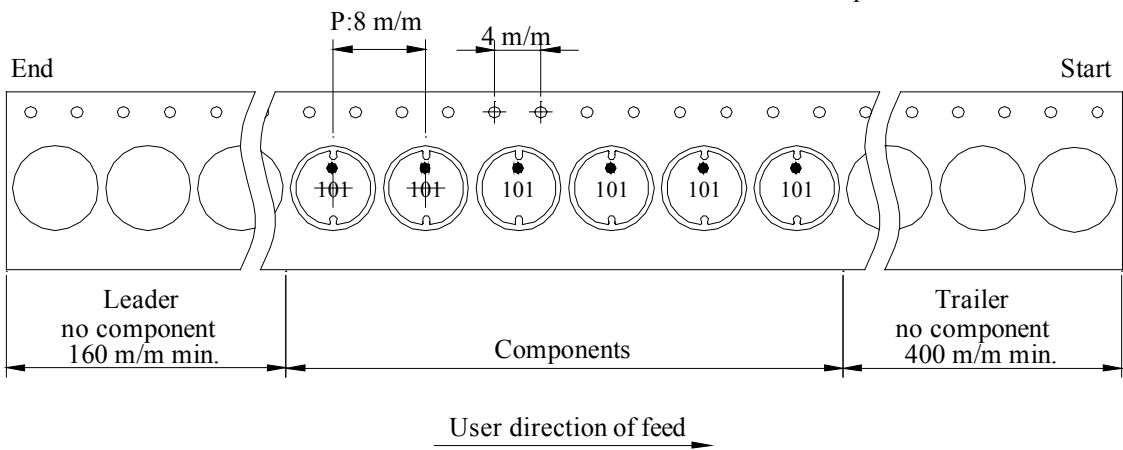
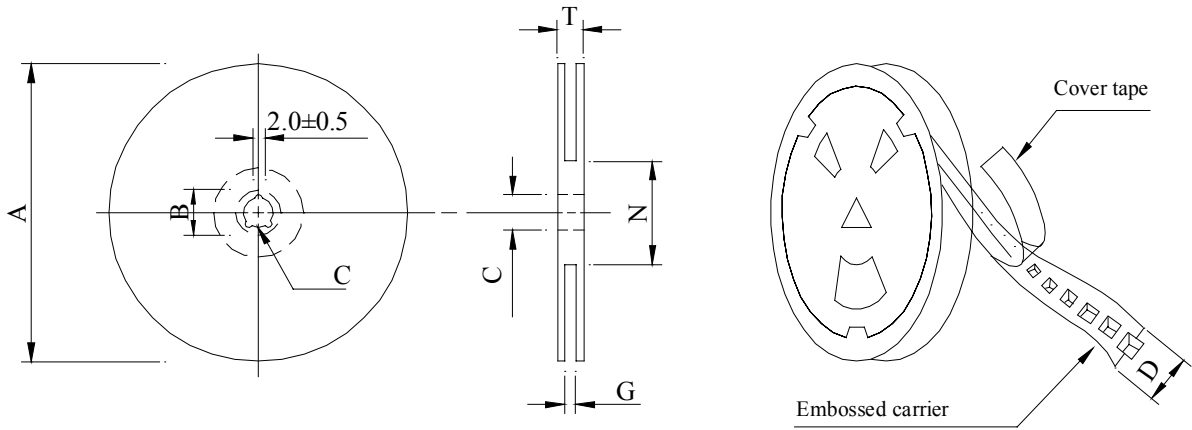
REF :

PAGE: 4

PROD. NAME	SMD POWER INDUCTOR	ABC'S DWG NO.	SR0603□□□□L□
		ABC'S ITEM NO.	

PACKAGING INFORMATION :

(1) Configuration



(2) Dimensions

Unit: m/m

Style	A	B	C	D	G	N	T
07 - 12	178	21±0.8	13	12	14 ⁺⁰	50 ⁻⁰	16.5
13 - 12	330	21±0.8	13±0.5	12	14 ⁺⁰	50 ⁻⁰	18.4

(3) Q'TY & G.W. Per package

Series	Inner : Reel			Outer : Carton		
	Q'TY (pcs)	G.W. (gw)	Style	Q'TY (pcs)	G.W. (Kg)	Size (cm)
SR0603	400	260	07 - 12	16,000	8.5	42 x 41 x 24
SR0603	1500	650	13 - 12	12,000	8.0	40 x 40 x 24

AE-001A



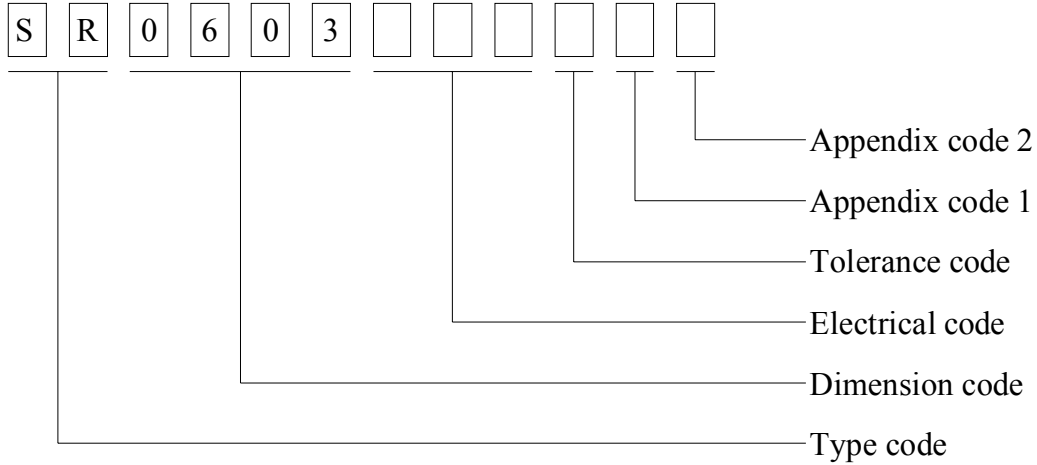
SPECIFICATION FOR APPROVAL

REF :

PAGE: 5

PROD. NAME	SMD POWER INDUCTOR	ABC'S DWG NO.	SR0603□□□□L□
		ABC'S ITEM NO.	

. DWG EXPRESSION :



- Appendix code 1 : S : Standard products
 A K , M R , T Z : Special products
 L : Standard Lead Free products
 1 ~ 9 : Special Lead Free products

Appendix code 2 :

Code	Inner package	Inner package Q'TY	Remark
A	Bag	400 pcs	
B	T / R (Reel package)	400 pcs	
C	T / R (Reel package)	1500 pcs	

SPECIFICATION FOR APPROVAL

REF :

PAGE: 6

PROD. NAME	SMD POWER INDUCTOR	ABC'S DWG NO.	SR0603□□□□L□
		ABC'S ITEM NO.	

. RELIABILITY TEST :

Test item	Specification	Test condition												
Solderability	More than 90% of the terminal electrode shall be covered With fresh solder.	Preheat : 150±25 for 60 seconds Solder : Sn96.5 / Ag3 / Cu0.5 or equivalent Solder temp. : 235±5 Flux : Rosin Dip time : 4±1 seconds												
Thermal shock test (Temp. cycle)	Inductance shall not change more than ±20%	<table style="width: 100%; border: none;"> <tr> <td style="text-align: center;">Room temp.</td> <td style="text-align: center;">—————></td> <td style="text-align: center;">-25±2</td> </tr> <tr> <td style="text-align: center;">15 minutes</td> <td></td> <td style="text-align: center;">30 minutes</td> </tr> </table> <table style="width: 100%; border: none;"> <tr> <td style="text-align: center;">Room temp.</td> <td style="text-align: center;">—————></td> <td style="text-align: center;">85±2</td> </tr> <tr> <td style="text-align: center;">15 minutes</td> <td></td> <td style="text-align: center;">30 minutes</td> </tr> </table> <p>Total : 50 cycles</p>	Room temp.	—————>	-25±2	15 minutes		30 minutes	Room temp.	—————>	85±2	15 minutes		30 minutes
Room temp.		—————>	-25±2											
15 minutes			30 minutes											
Room temp.		—————>	85±2											
15 minutes		30 minutes												
Humidity Resistance test	Temperature : 40±2 Humidity : 90 ~ 95% Applied current : Per spec. Time : 500 hours													
High temp. Resistance test	Temperature : 105±2 Applied current : Per spec. Time : 500 hours													

AE-001A



SPECIFICATION FOR APPROVAL

REF :

PAGE: 7

PROD. NAME	SMD POWER INDUCTOR	ABC'S DWG NO.	SR0603□□□□L□
		ABC'S ITEM NO.	

UL CARD :

OBMW2 September 8, 2000

Magnet Wire-Component

JUNG SHING WIRE CO LTD E174837

231 CHUNG CHENG RD, SEC 3 JEN-TEH HSIANG, TAINAN

HSIEN TAIWAN

Mtl Dsg	Mark Dsg	BC	Coat Typ	OC	ANSI Type	Temp Class
AIW	---	Polyamideimide		---	MW81-C	220
CFUEWB	---	Polyurethane		---	MW75C	130
EIAIW	---	Polyesterimide		Polyamideimide	MW35C	200
EILOCKY	---	Polyesterimide		Polyamide	---	180
EILOCKW	---	Polyesterimide		Modified Epoxy	---	200
EIW	---	Polyesterimide		---	---	220
EIW-2	---	Polyesterimide		---	MW74-C	200
FL.EILOCKY	---	Modified Polyester		Polyamide	---	155
LSFFW	---	Polyurethane		---	MW79-C	155
LSUEW	---	Polyurethane		---	---	130
PEW	---	Polyester		---	---	155
PEY	---	Polyester		Nylon	MW24-C	155
SF.FLW	---	Modified Polyester		---	MW26C	155
SF.EIW	---	Polyesterimide		---	MW77C	180
SF.BY@	---	Modified Polyester		Nylon	MW27-C	155
SF.FLY@	---	Modified Polyester		Nylon	MW27-C	155
SF.BLOCKBS	---	Modified Polyester		Modified Polyamide	---	155
SF.EILOCKY#	---	Polyesterimide		Polyamide	---	180
SF.EILOCKBS	---	Polyesterimide		Modified Polyamide	---	180
SF.BW@	---	Modified Polyester		---	MW26C	155
SFFW	---	Polyurethane		---	MW79	155

287806002 Page 1 of 2

A not-for-profit organization dedicated to public safety and committed to quality service

Mtl Dsg	Mark Dsg	BC	Coat Typ	OC	ANSI Type	Temp Class
SFFY	---	Polyurethane		Polyamide	MW80C	155
UEW-1	---	Polyurethane		---	MW2-C	105
UEW-2	---	Polyurethane		---	---	130
UEW-4	---	Polyurethane		---	MW75C	130
UEY	---	Polyurethane		Nylon	MW28-C	130
UEY-2	---	Polyurethane		Polyamide	MW28-C	130

@-May be suffixed by LZ; # - May be suffixed by LZ, EL or LZL.
 LZ - Signifies magnd wires twisted together; EL - signifies base coated magnet wire laid parallel with top coat applied overall; LZL - signifies base coated magnet wire twisted together and covered with top coat overall.
 Marking: Company name or trademarks or 榮星電線, material designation or marked designation on packaed or reel, and Recognized Component Mark.

See General Information Preceding These Recognitions
 For use only in equipment where the acceptability of the combination is determined by Underwriters Laboratories Inc.

287806002 Page 2 of 2

OBMW2E174837
September 8, 2000

AE-001A

